



BlueCherry® Collaborative Supply Chain (CSC)

Integrating sourcing with your PLM and ERP allows for faster time to market, enhanced visibility across the supply chain and better cost management—all geared to increase agility to best meet consumer needs and demand.

BlueCherry® Collaborative Supply Chain (CSC) helps companies better manage the production process by integrating the entire supply chain through a web-based portal that is connected directly to the **BlueCherry®** system. Information is available to global partners and can be updated in real time, reducing costly errors, eliminating paper and accelerating cycle times.

With **BlueCherry®** CSC time lags and overlooked updates are eliminated. RFQs and tech packs can be delivered electronically and production schedules can be jointly managed with your partners to accelerate the production process and ensure on-time delivery. Global partners and vendors can submit quotations, update production schedules, and provide shipping details that can feed directly into your ERP and PLM solutions.

Main Features of BlueCherry® CSC:

Product Development: Solicit quotations, deliver technical packages and manage sample evaluations electronically with your global sourcing partners.

Production Management: Manage your production orders from PO issuance to shipment and collect real-time updates that can be accepted back into the **BlueCherry®** Production Order details.

Workflow: Assign production tasks to your global sourcing partners and collect real-time progress reports to update your PLM Time and Action calendars.

Key Benefits

Complete Visibility

CGS' collaborative supply chain solution presents complete visibility into the entire global supply chain and provides connectivity to any partner around the world in real-time.

Enhance Collaboration

Share tech packs, detail images, solicit and manage bids, update production schedules, and receive shipping details.

Reduce Costs

Reduce errors and rework associated with inaccurate or outdated product information, redundant data entry, and informational gaps.

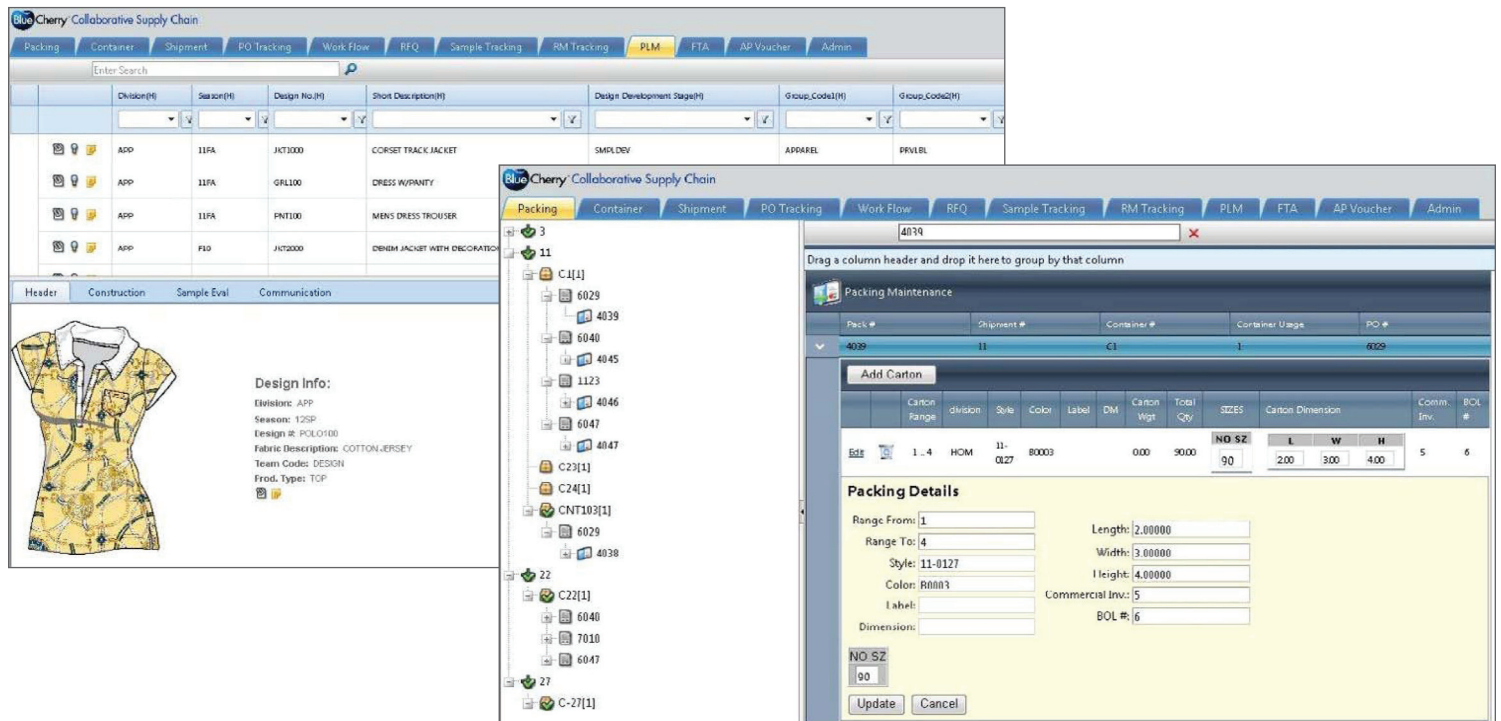
Integrate Development & Sourcing

To accelerate speed-to-market, enhance visibility across the supply chain, and better manage costs.

Manage Sample Evaluations

Place sample orders and manage fit and construction issues through multiple sample iterations.

Collaborative Supply Chain																	
[1400] - 1400 PRODUCTION AREA																	
change password Logout About																	
Packing	Container	Shipment	PO Tracking	Work Flow	RFQ	Sample Tracking	RM Tracking	PLM	FTA	Admin							
Update Changes																	
Page size: 25 307 items																	
	Entry Date (H)	Entry User (H)	Merch Group1 Description (H)	Merch Group2 Description (H)	Material Code(H)	Merch Group3 Description (H)	Design No. (H)	Short Description (H)	Request Date	date of	NY Office Date	Projected Date	Projected Date	Ship Date	Received Date	NY Comments	Vendor Comments
	04/08/2005	CGSADMIN	WOMENS	LAFAYETTE		LF50027	DENIM PANTS		01/03/2011	01/05/2011	01/04/2011	01/06/2011	01/07/2011	01/08/2011	01/09/2011	due tomorr	on way
	04/23/2005	CGSADMIN	WOMENS	BLUE DENIM		LF5.023-	WOMENS DENIM JACKET		1/12/2011	1/27/2011	1/27/2011	1/27/2011	1/25/2011	1/24/2011	1/25/2011	what is stat.	
	04/23/2005	CGSADMIN	WOMENS	BLUE DENIM		LF5.024-	WOMENS DENIM JACKET		1/26/2011	1/27/2011	1/28/2011					news	
	04/23/2005	CGSADMIN	WOMENS	BLUE DENIM		LF5.023-	WOMENS DENIM JACKET		2/2/2011	2/4/2011			2/4/2011				
	08/26/2005	CGSADMIN	WOMENS	COTTON		#G5RT	C.GS TEST		1/27/2011		1/28/2011					notes	



Key Features & Benefits

Web-based Portal:

- Solicit RFQs, deliver technical packages and exchange electronic documents with your entire design and production team, including external vendors.
- Share technical design details with collaborators, including specifications, detail images and sample evaluations.
- Manage sample fittings, production orders and packing and shipping centrally.
- Raw Material/Lab dip tracking and approvals.

Track Development and Production Status:

- Assign tasks for product development and production and capture status updates from distributed team members and external partners.
- Collect milestone updates and import them directly into your PLM Time and Action Calendar.
- Securely allow collaborators to update production orders, then import updates directly into your ERP.

Seamless Integration with BlueCherry® ERP and PLM:

- Vendors and consolidators can create packing lists that link directly to the BlueCherry® ASN and Goods In Transit Processing.
- Allow vendors to enter packing and shipping data, then import data directly into your ERP.
- Automate the creation of packing and shipping notification in CSC through EDI 856 transactions.

To learn more about BlueCherry®, contact your BlueCherry® sales representative at 212-408-3809 or email us at applications@cgsinc.com. You can also visit us at www.cgsinc.com. Computer Generated Solutions, Inc., 200 Vesey Street, Brookfield Place, New York, NY 10281-1017

For over 30 years, CGS has enabled global enterprises, regional companies and government agencies to drive breakthrough performance through business applications, enterprise learning and outsourcing services. CGS is wholly focused on creating comprehensive solutions that meet clients' complex, multi-dimensional needs and support clients' most fundamental business activities. Headquartered in New York City, CGS employs more than 5,200 professionals across North America, Latin America, Europe and Asia. For more information, please visit www.cgsinc.com.